

# Mrs. Swartout's Sneak a Peek

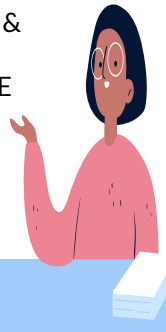
## Date: September 28-Oct. 2



Monday Sept. 27	Tuesday Sept. 28	Wednesday Sept. 29	Thursday Sept. 30	Friday Oct. 1
<b>NWEA MAPS TEST: Math</b> 8:00-9:00 am	<b>Reading Project due</b> <b>NWEA MAPS TEST: L.</b> <b>Arts 10:00-11:00</b>	Mass Day <b>Religion Creation</b> <b>Project Due</b> <b>Reading Project due</b>	<b>Math Quick Check quiz</b> <b>NWEA MAPS TEST:</b> <b>Reading 11:00-12:00 pm</b>	<b>5-3 Spelling Test</b>

### Specialists

Monday: Spanish & Music  
Tuesday: PE & Art  
Wednesday: Tech & Spanish  
Thursday: Tech & Music  
Friday: Art & PE



### Other Notes:

- Your water bottle must be brought back and forth from school daily. Please wash it nightly.
- Please sign off on the folder each week with your initials . This folder will be sent home on Fridays or the last day of the week and needs to be returned the following week.
- Homework will be given on the weekends and due on Monday!

### Important Dates:

- NO 196 Busing am, Friday Oct. 1
- No School October 8 Teacher In-Service
- Friday, October 15: Faith in Action
- No School: Thursday, October 21 & Friday October 22

### Spelling Words

Skill: Closed & Open Syllables  
Division Pattern: VC/CV or V/CV

- |               |              |
|---------------|--------------|
| 1. disgust    | 11. basic    |
| 2. conquest   | 12. token    |
| 3. kindred    | 13. item     |
| 4. accomplish | 14. superb   |
| 5. establish  | 15. volcano  |
| 6. fantastic  | 16. rivalry  |
| 7. excellent  | 17. opponent |
| 8. intellect  | 18. diplomat |
| 9. industry   | 19. acrobat  |
| 10. assembly  | 20. tomato   |

Red Words: February, spirit